

A world map with a light blue background and various countries colored in shades of yellow, orange, green, and pink. The map is centered on the Atlantic Ocean. The text 'Geography GCSE' is overlaid in large, bold, black font across the center of the map.

# Geography GCSE

2021-2023





**GCSE**

**Geography**

**Fieldwork**

Tourism  
Choice  
Disease  
Sport  
Economic  
Passionate  
Assessment  
Technologies  
Graduate  
Maps  
Discovery

Dynamic  
Career  
Interdependence  
Thought  
Physical  
Coasts  
Impact  
Trade  
Response  
Development  
Essential  
Cause  
Flexible  
Human  
Problem-Solving  
Investigation  
Responsibility  
Social  
Environmental  
Analyze  
Skills

Hazards  
Wonder  
Teamwork  
Culture  
Presentation  
Transferable  
Ecosystems  
Responsible  
Rivers  
Fashion  
Enquiry  
Sustainable  
Adaptable  
Interesting  
Employable  
Population  
Mystery

Crime  
Settlement  
Enquiry  
Sustainable  
Adaptable  
Interesting  
Employable  
Population  
Mystery



# The Course

A world map is visible in the background, showing continents in yellow and orange and oceans in blue. Labels for 'ALASKA (USA)', 'GREENLAND (DENMARK)', 'ARGENTINA', 'SOUTH AFRICA', and 'AUSTRALIA' are visible on the map.

The content of the specification is organised into three broad themes:

**Theme 1: Changing Places - Changing Economies**

**Theme 2: Changing Environments**

**Theme 3: Environmental Challenges**



# Course content

## Urban Studies

- Greenfield/Brownfield
- Mumbai/Sydney
- Transport Routes
- Retail Patterns
- Global Trade Patterns
- Differences in Urban Areas
- Aid in Different Countries

## Climate Change

- Causes of Climate Change
- Impacts of Climate Change on a Range of Different Countries
- Solutions and Attitudes Towards Climate Change

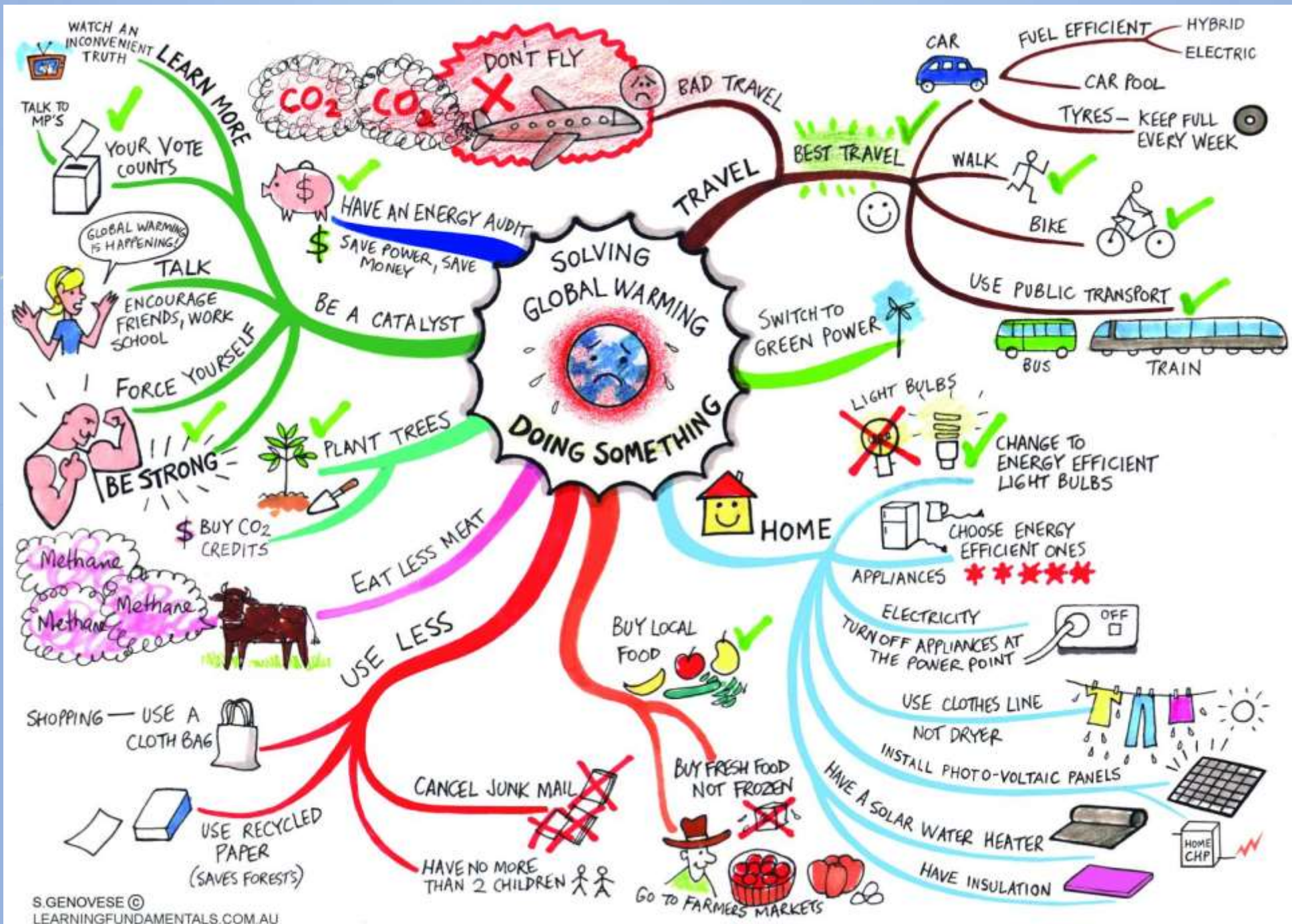
## Physical Landscapes

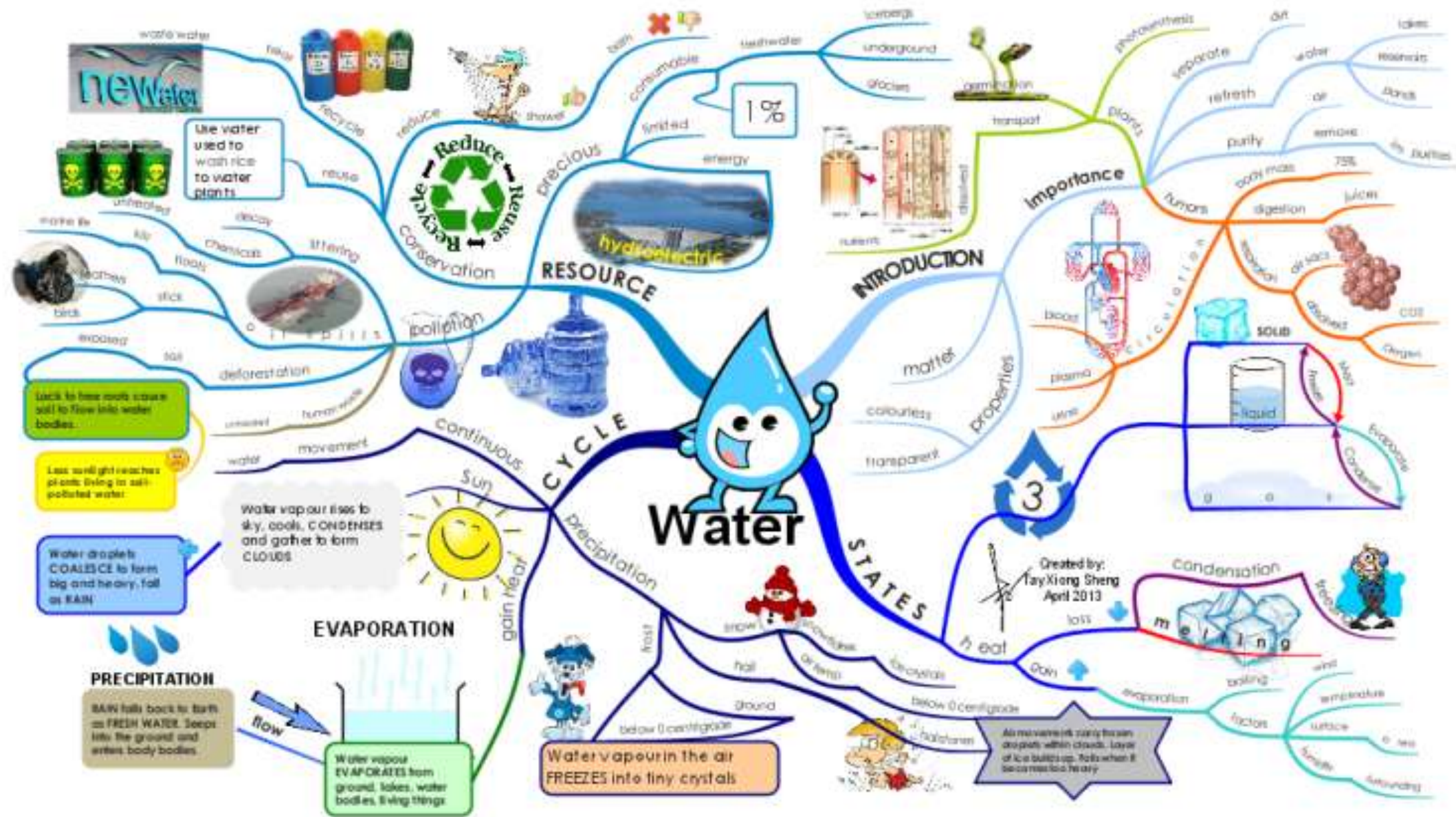
- Coastal Features & Processes
- Coastal Management Strategies
- Impact of Climate Change on Coasts
- River Landscapes and Processes
- Managing Flood Threats
- Global Air Circulation
- Managing Extreme Weather

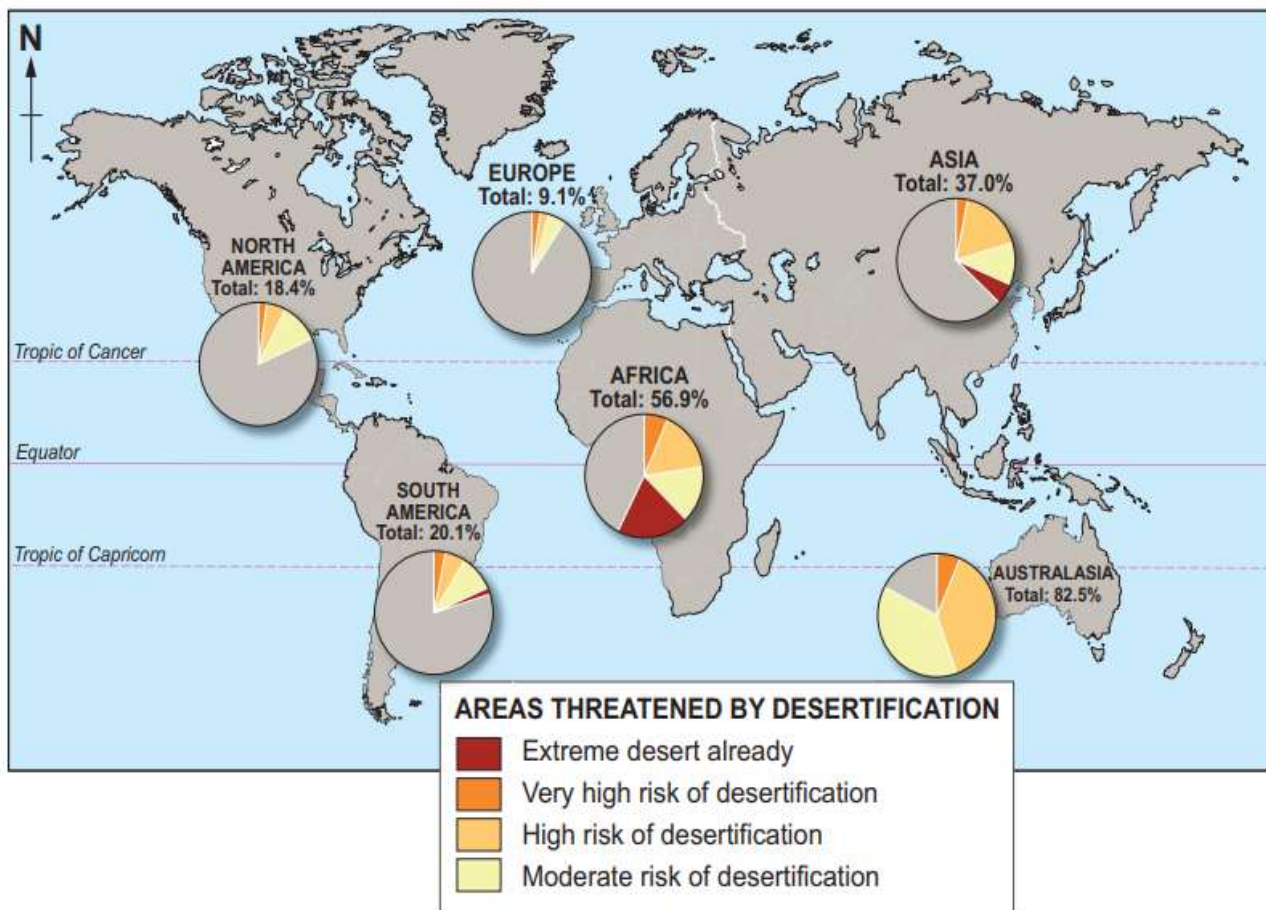
## Ecosystems

- Climate and Biomes
- Processes Within Ecosystems
- Small Scale Biomes in the UK
- Use, Abuse and Management of Ecosystems
- Water Management and Countries Suffering Water Stress
- Features, Use and Management of Savannah Landscapes

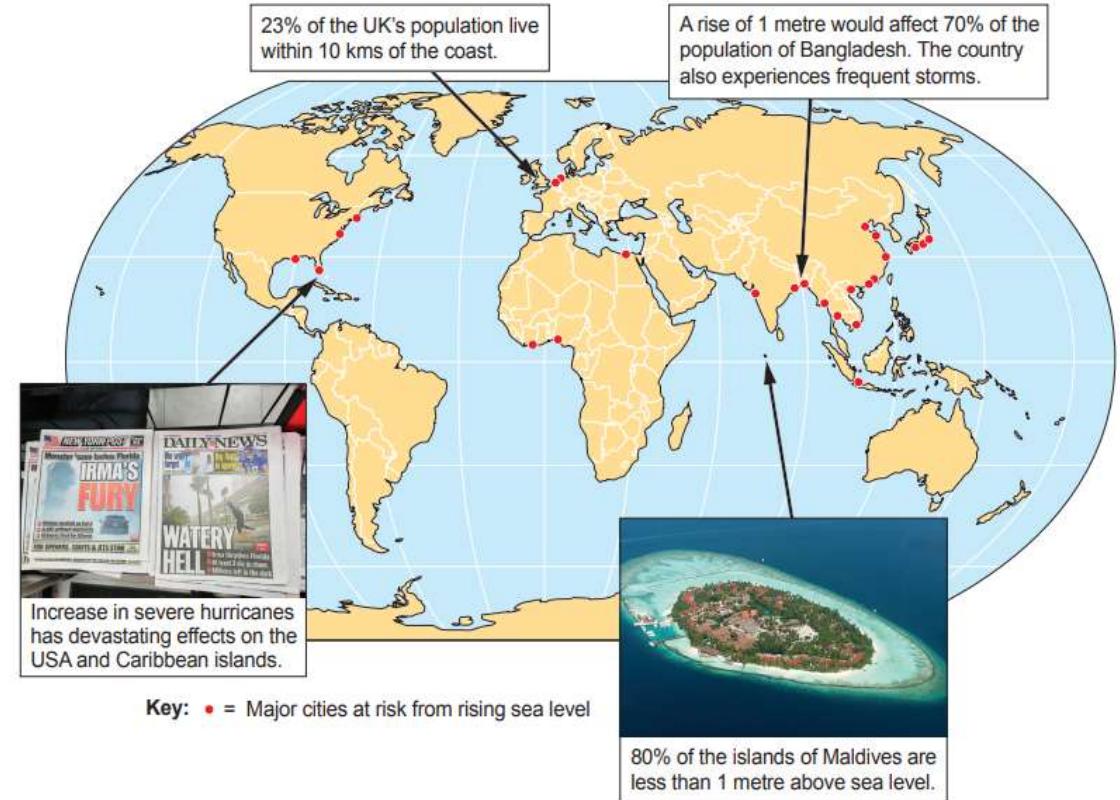




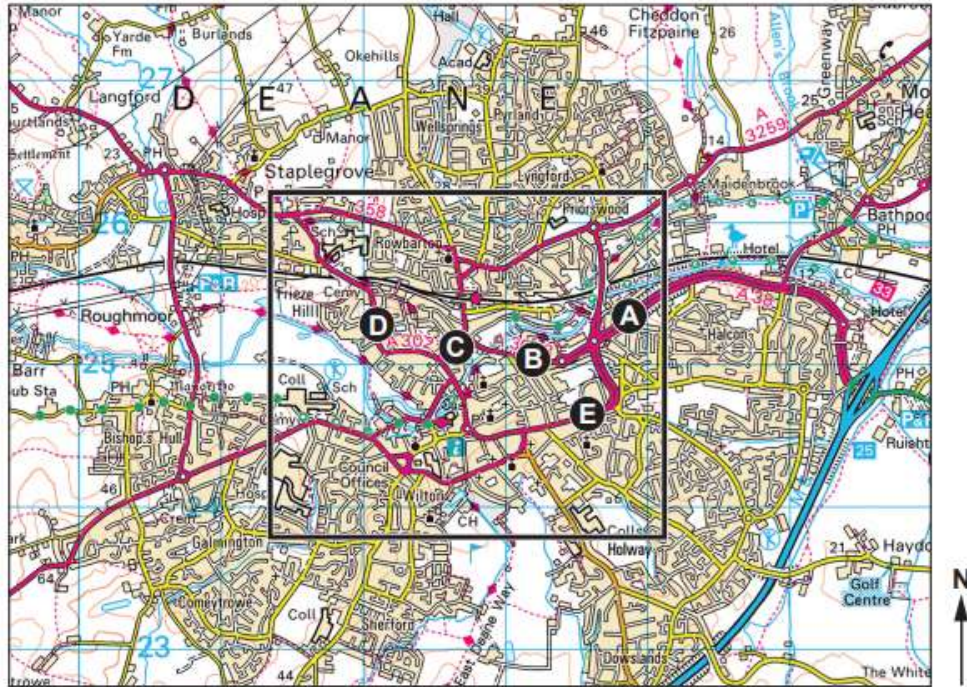





**Figure 2.3 Some areas of the world are at significant risk from rising sea levels and increased frequency of storms.**



Map 1.1 - Traffic survey points in Taunton



 = area of town centre

0 1km

The students collected data on the number and types of traffic on a Monday morning.

- (i) Suggest **two** ways the students could improve their data collection of traffic flows. [2]

Way 1 .....

Way 2 .....

Figure 2.1



In which direction was the photograph taken?  
Tick (✓) the correct box below.

Direction	Tick (✓)
North-west	
North-east	
South-west	
South-east	







# WHERE CAN GEOGRAPHY TAKE YOU?



## ENERGY & UTILITIES

By 2023, it's estimated that this industry's workforce will need to increase by more than 200,000 people due to renewable power introducing a wider range of jobs.

### CAREER PATHS

- Petroleum Engineer
- Geochemist
- Mudlogger



## AGRICULTURE

Between 2010 and 2020, it's estimated that the agriculture industry will need 200,000 extra employees.

### CAREER PATHS

- Farmer
- Tree Surgeon
- Farm Worker
- Ecologist



## EDUCATION

People who work in education (especially teachers) have one of the highest rates of job satisfaction in the UK. 78% of teachers say they enjoy their job.

### CAREER PATHS

- Geography Teacher
- Private Tutor
- University Lecturer



## SCIENCE & RESEARCH

It's predicted that in the next few years, 1 in 4 jobs will have been created by science and research - leading to 140,000 new science jobs by the end of 2018.

### CAREER PATHS

- Research Scientist
- Geologist
- Statistician



## PUBLIC SECTOR

Although the amount of jobs in this sector has decreased in recent years, there is a demand for those with good digital and computer literacy.

### CAREER PATHS

- Member of Parliament (MP)
- Civil Servant
- Environmental Health Officer



## CONSULTANCY

In the future, consultants with skills and knowledge in digital technology, financial services, retail and infrastructure will be in high demand.

### CAREER PATHS

- Management Consultant
- Data Analyst
- IT Consultant



